

## Fully powered straddle Logiflex - makes work easy

High flexibility and efficiency - a fully powered straddle Logiflex can transport, lift and handle different goods. All types of pallets - also closed pallets - can be handled.

Large range of optional extras ensures an optimum flexibility.

The design puts focus on the safety and ergonomic working conditions of the user - Logiflex can be adjusted to the individual user, and the ergonomic correct handle ensures the user a relaxed hold.

High quality is ensured through an extended test programme and in cooperation with experts in Health and Safety.



# LOGIFLEX SELFS

## Technical Specifications

Straddle legs make it possible to handle many different pallet types.

Full electronic controller ensures

- infinitely variable speed control
- soft acceleration
- long operating time per charge

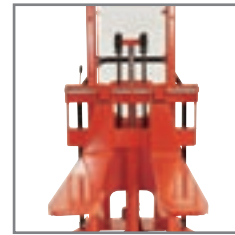
Strong construction ensures a long operating life and low maintenance costs.



Available with side-tilting forks and/or optional extras, e.g. drum turner, remote control, level control, built-in charger.



Possible to operate with the handle upright. Central location of all control buttons.



Adjustable forks are available in many different lengths and types.

Product (measured in mm)		SELS	SELS	SELS	SELS	SELS	SELS	SELS	SELS
Capacity in kg		1000/1200	1000/1200	1000/1200	1000/1200	1000	1000	1000	1000
Lifting height by wrap-over forks		h <sub>3</sub>	870	1170	1370	1570	1880	2020	2420
Fork length		l	600*, 800*, 1067, 1150, 1520**						
Overall height		h <sub>1</sub>	1330	1530	1730	1930	2240	1530	1730
Overall width		b <sub>1</sub>	166 + b <sub>4</sub>						
Fork span min./max.		b <sub>5</sub>	Wrap-over: 350/800, bar and chisel: 230/680 (1200 kg models are only available with chisel forks)						
Length without forks		l <sub>2</sub>	590						
Overall length by 1150 forks		l <sub>1</sub>	1855				1865		
Overall height		h <sub>4</sub>	Without telescopic mast				2490	2890	3290
Lowered height, forks		h <sub>13</sub>	Chisel: 45, bar: 65, wrap-over: 65						
Load centre		c	l/2						
Width between legs: Cap. 1000/1200 kg		b <sub>4</sub>	850 - 942, 942 - 1124, 1124 - 1306, 1240-1422*** / 850 - 942, 942 - 1124						
Fork width		e	Chisel: 100, bar: 100, wrap-over: 163						
Run-in length		l <sub>x</sub>	1080 by 1150 and 1067 fork length						
Gangway (pallet: 1200 x 800)		A <sub>st</sub>	2200 - tests show that 1700 mm are enough - depends on width between straddle legs						
Free lift							190		
Turning angle of the wheels		210°							
Driving motor		1,2 kW 24 V speed control electronically variable							
Driving speed with/without load		Below 500 mm lift: 5/6 km/h, over 500 mm lift: 3/4 km/h							
Pump motor		1,2 kW 24 V							
Lifting speed with/without load		Cap. 1000 kg: 0,07/0,12 m/s, cap. 1200 kg: 0,04/0,07 m/s							
Lowering speed with/without load		0,12/0,04 m/s					0,12/0,06 m/s		
Weight in kg (no battery): Cap. 1000/1200 kg		392/394	411/413	417/419	421/423	429	472	479	488
									502

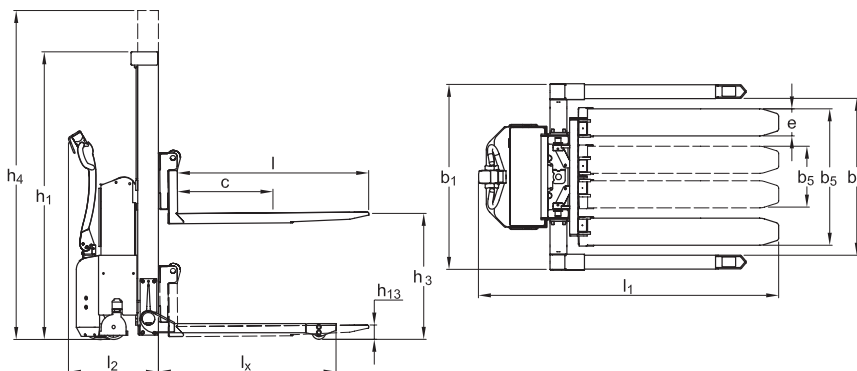
\* Maximum lifting height 1570 mm by 600 mm fork length, maximum lifting height 2420 by 800 mm fork length.

\*\* Reduced capacity 750 kg. Not available for 1200 kg models.

\*\*\* Width between straddle legs of more than 1306 mm: Max. capacity 800 kg. Fork length of 1520 mm is not recommended.



Optimum safety through transparent and impact-resistant safety screen and reduced driving speed in raised position.



We also offer tailor-made solutions. Please ask for further information.